

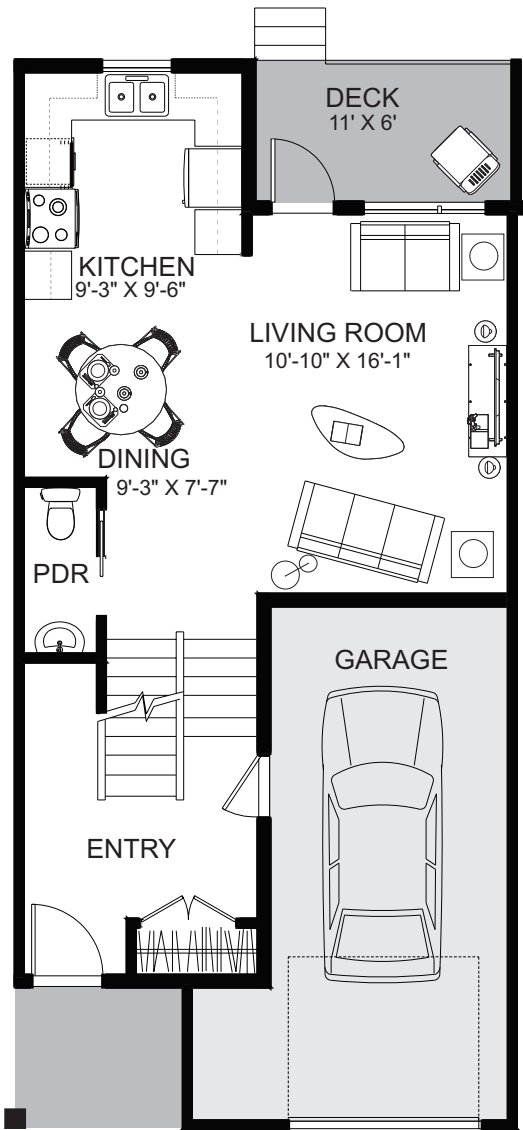
ASCENT **condos**

FAIRFIELD PARK

SEYMOUR

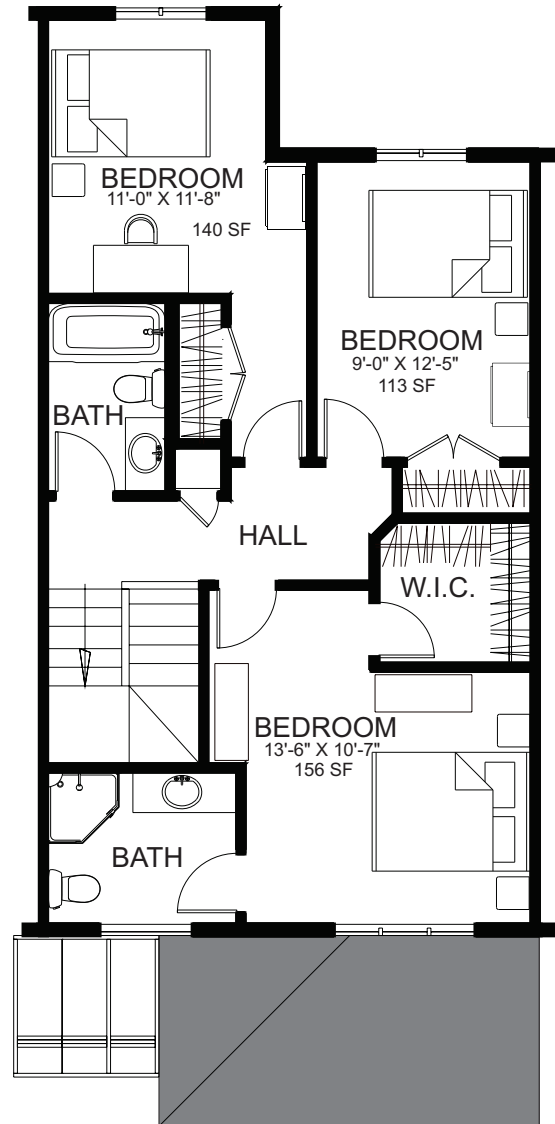
2 STOREY TOWN HOME
3 BEDROOM - 2 1/2 BATHS

1291 SQ. FT.



MAIN FLOOR PLAN

588 SQ. FT.



SECOND FLOOR PLAN

703 SQ. FT.

ASCENT

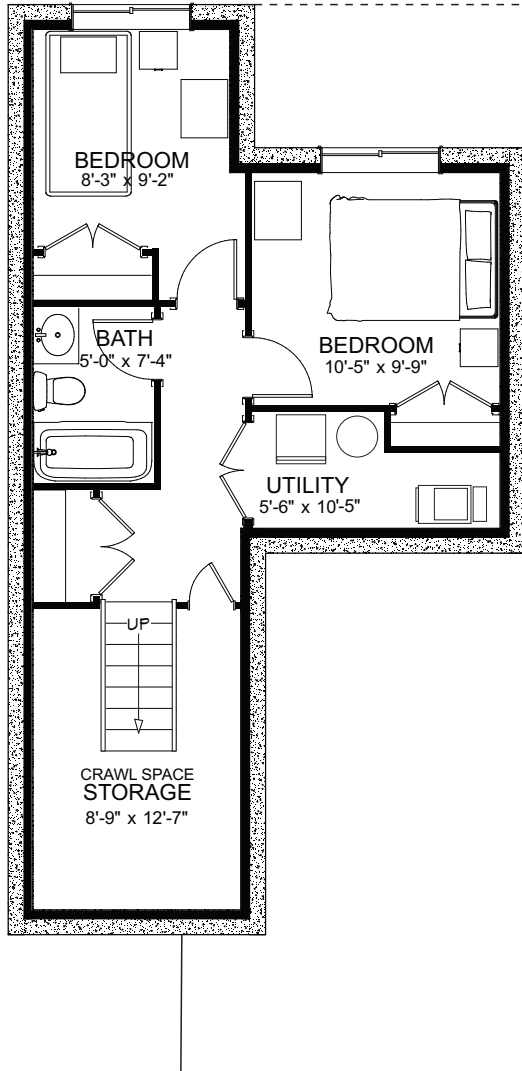
condos

FAIRFIELD PARK

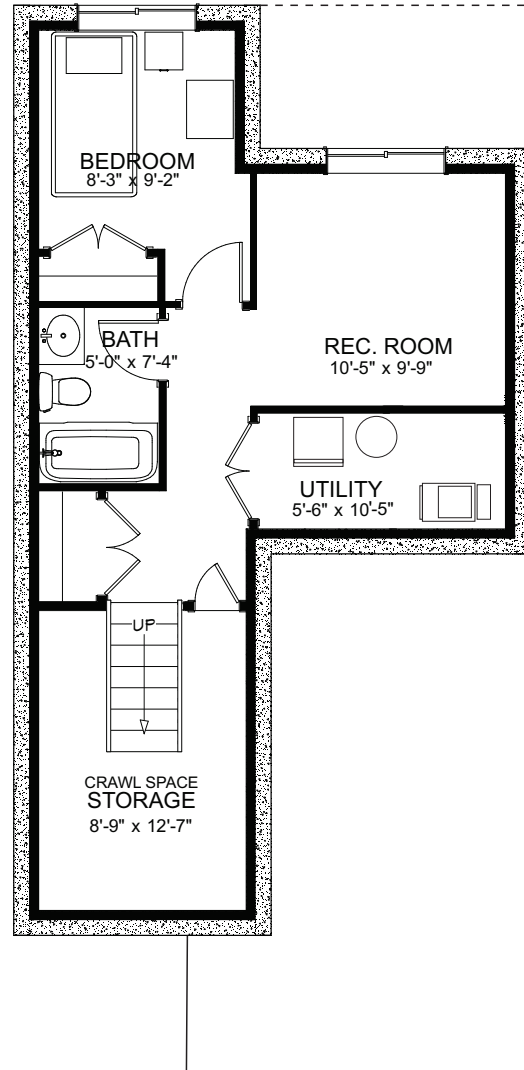
SEYMOUR

2 STOREY TOWN HOME
3 BEDROOM - 2 1/2 BATHS

1291 SQ. FT.



LOWER FLOOR PLAN A



LOWER FLOOR PLAN B

375 SQ. FT.

OPTIONAL LOWER LEVEL DEVELOPMENT PLANS

The information herein is subject to change at any time, drawings, room sizes and fixture shown may be approximate and subject to change without notice. Some fixtures shown, including furniture are not included in the purchase price of the unit. Please confirm all aspects of the sale with your sales consultant.